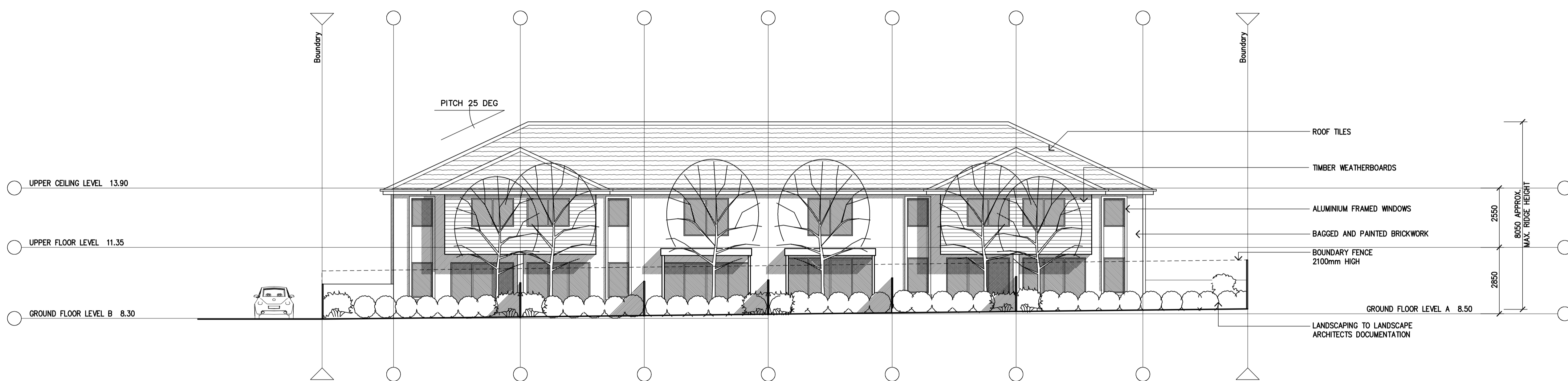
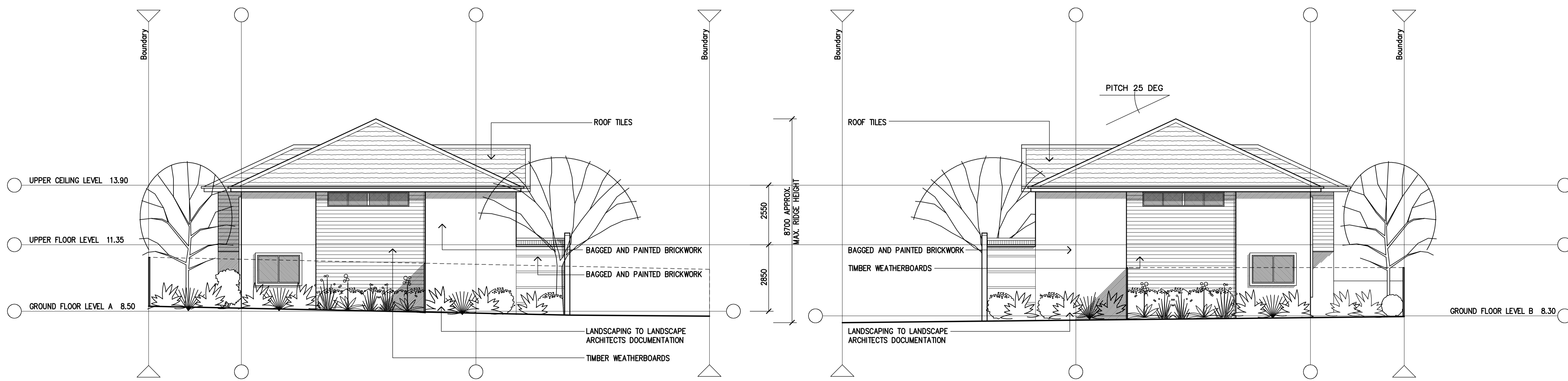


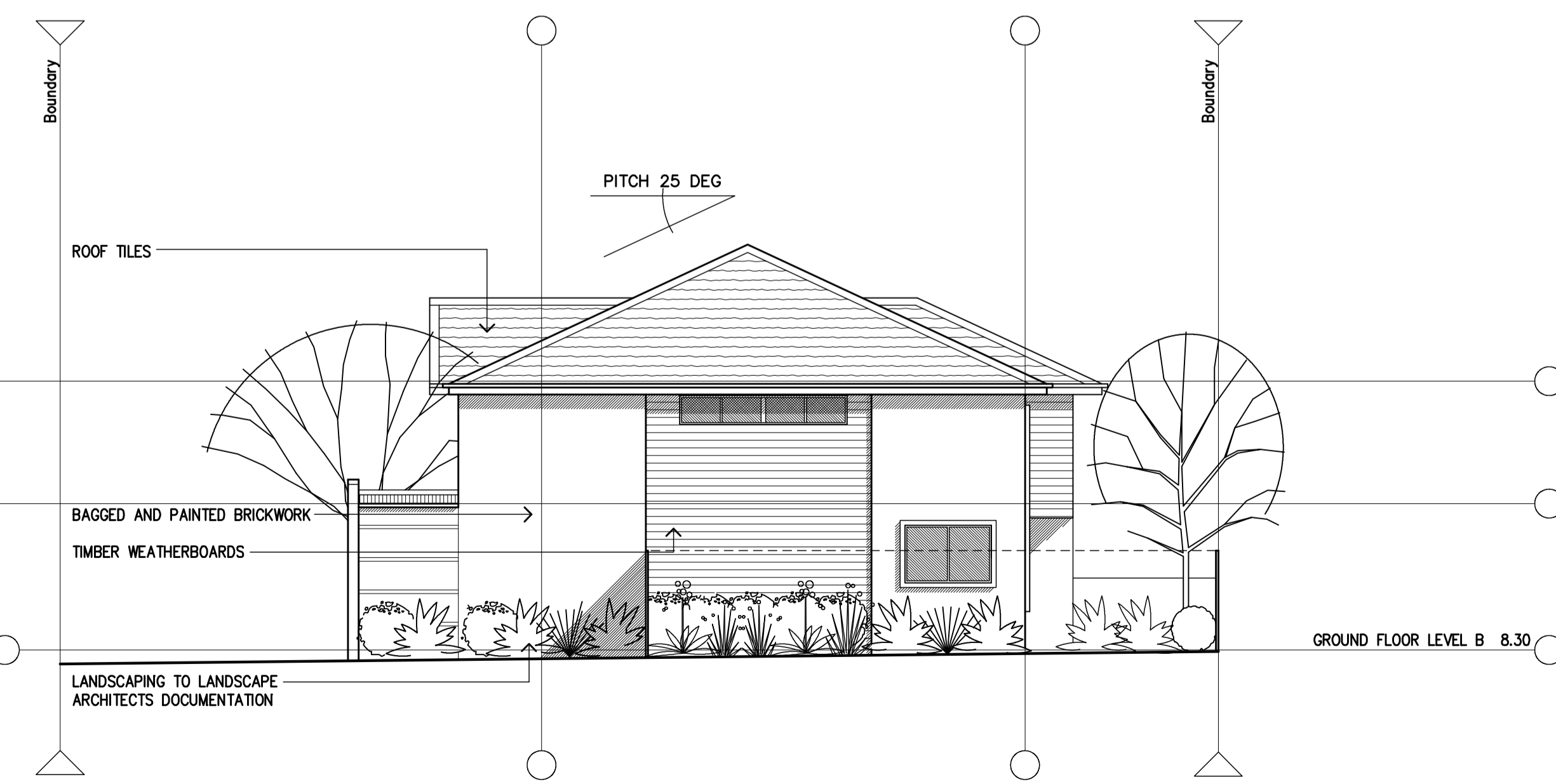
NORTH WEST



SOUTH EAST



NORTH EAST



SOUTH WEST

LEGEND:
- -

CONSULTANTS:

| | |
|---|---|
| ARCHITECTURAL SHADDOCK SMITH ARCHITECTS T 4926 4800 F 4926 4833 | CIVIL ENGINEER MFC CONSULTING ENGINEERS P/L T 4927 5066 F 4927 5577 |
| LANDSCAPE ARCHITECTURAL TERRAS LANDSCAPE ARCHITECTS T 4929 4928 F 4929 3089 | SURVEYOR CARMAN SURVEYORS T 4961 1866 F 4961 1855 |
| BASIX AND TPA BUILDING SUSTAINABILITY ASSESSMENTS T 4962 3439 F 4962 3470 | |

NOTES:
All dimensions are in millimeters unless otherwise shown.
All levels are in metres to AHD unless otherwise noted.
Work to figured dimensions. Do not scale from drawings.
Check all dimensions on site and report any discrepancies to Shaddock Smith Architects prior to construction or fabrication of any item.
This drawing is to be read in conjunction with the total documentation package.

| No. | REVISION | DATE |
|-----|------------------------------------|------------|
| 0 | PRELIMINARY | 27.11.2008 |
| A | ISSUED FOR DEVELOPMENT APPLICATION | 02.12.2008 |
| B | AMENDED DEVELOPMENT APPLICATION | 30.01.2009 |
| C | AMENDED DEVELOPMENT APPLICATION | 03.02.2009 |
| D | FOR CONTRACT OF SALE | 25.02.2009 |

copyright shaddock smith architects
ABN 37 183 187 361

| | | |
|---------------|--|-----------------------|
| PROJECT | TOWNHOUSE DEVELOPMENT | |
| LOCATION | LOT 4 & 5 DP 1127749 UNION STREET COOKS HILL | |
| CLIENT | HAWKES CREEK PTY LTD | |
| DRAWING TITLE | ELEVATIONS | |
| SCALE | 1:100 at A1 | No. IN SET 3 of 4 |
| REVISION | D | DWG No. A03 |
| DATE | 25.02.2009 | |
| PROJECT No. | 581 | |

SHADDOCK SMITH ARCHITECTS
33 SCOTT STREET NEWCASTLE 2300
TELEPHONE: 02 49264800 FAX: 02 49264833
mail@shaddocksmith.com.au